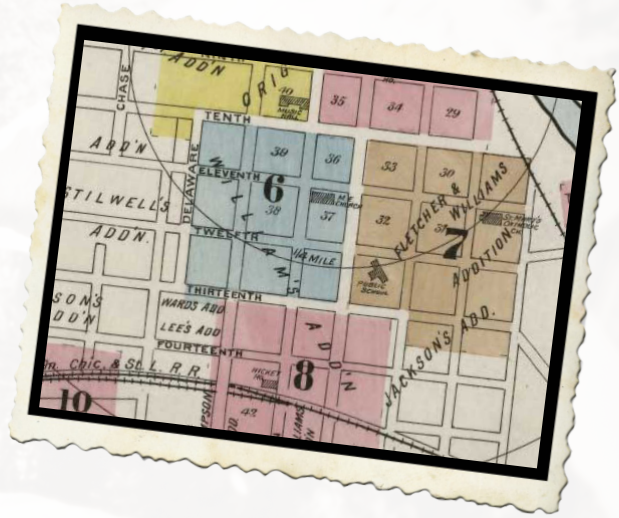


# Find Your Ancestors

## Using Maps in Genealogy

Saturday, November 3 | 2:00 pm | Meeting Room C

Join us as researcher Susan Fassbender teaches us how to use Sanborn Insurance Maps and Google Earth to help trace your family tree.



## Writing Biographical Sketches

Saturday, December 8 | 2:00 pm | Meeting Room C

Lori Bessler, Reference Librarian at the Wisconsin Historical Society, will teach us how to turn our genealogy research into stories to pass down to future generations.

## Using Census Records

Saturday, January 19 | 2:00 pm | Meeting Room C

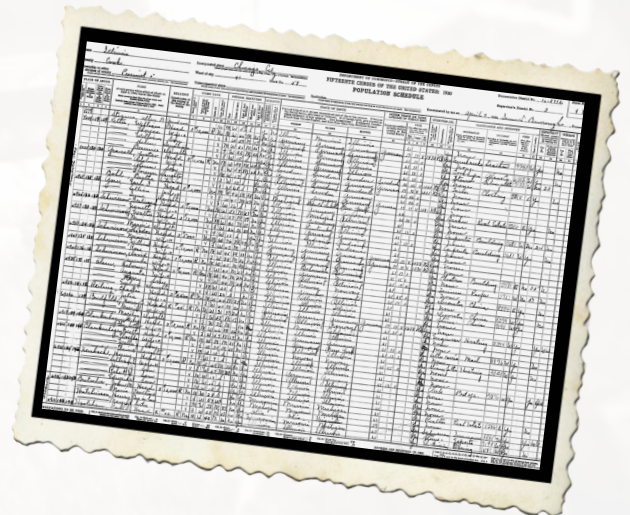
Learn about overlooked details found in census records, and how census data can broaden knowledge of your family from Tracy Reinhardt, Library Director for the Fond du Lac County Historical Society.



## Publishing Your Research

Saturday, February 9 | 2:00 pm | Meeting Room C

Join Jen Rubin of the Wisconsin Historical Society Press as she discusses the options for publishing and how to self-publish your genealogy research or memoir.



## DNA from A to B

Saturday, March 16 | 2:00 pm | Meeting Room C

Dr. Daniel Hubbard will explain the various types of DNA testing, how reliable they are and what to do with your results.